

## Anti-CLDN6/9 hIgG1 Antibody

### Product information

GM-49724AB-10	10 µg
GM-49724AB-100	100 µg
GM-49724AB-1000	1 mg

### Antibody Information

Species Reactivity	Human; Cynomolgus;
Source/Isotype	Monoclonal human IgG1, κ
Application	Flow cytometry;
Gene ID	NM_021195.5(human_CLDN6); G7Q0B0-1(Cynomolgus_CLDN6); F7AWZ8-1(Rhesus_CLDN6); B4F7F0-1 ( Rat_CLDN6) O95484 (H_CLDN9); XM_005591021 (Cynomolgus_CLDN9);
Storage	Store at 2-8°C short term (1-2 weeks).Store at ≤ -20°C long term. Avoid repeated freeze-thaw.
Formulation	Phosphate-buffered solution, pH 7.2.
Endotoxin	< 1 EU/mg, determined by LAL gel clotting assay

## Data Examples(CLDN6)

Flow cytometry

H\_CLDN6 HEK-293 Cell Line (Catalog # GM-C15737) was stained with Anti-CLDN6/9 hlgG1 Antibody or isotype control antibody.

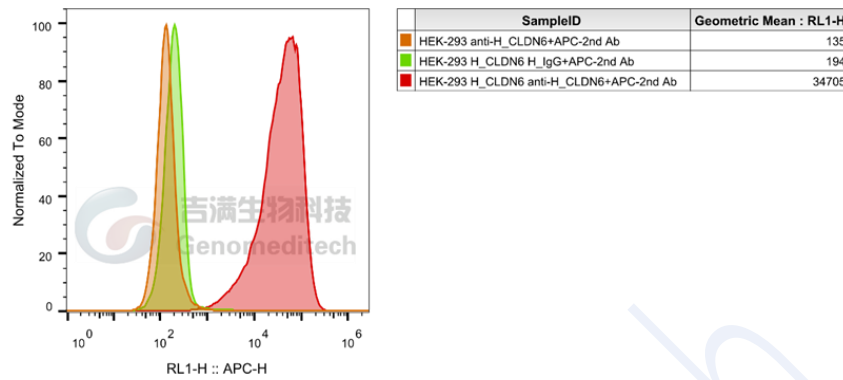


Fig. FACS

Flow cytometry

Cynomolgus\_CLDN6 CHO-K1 Cell Line (Catalog # GM-C21210) was stained with Anti-CLDN6/9 hlgG1 Antibody or isotype control antibody.

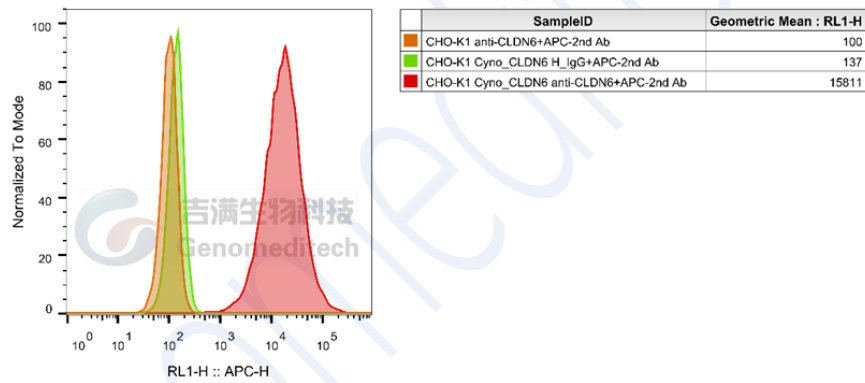


Fig. FACS

Flow cytometry

Rhesus\_CLDN6 CHO-K1 Cell Line (Catalog # GM-C15734) was stained with Anti-CLDN6/9 hlgG1 Antibody or isotype control antibody.

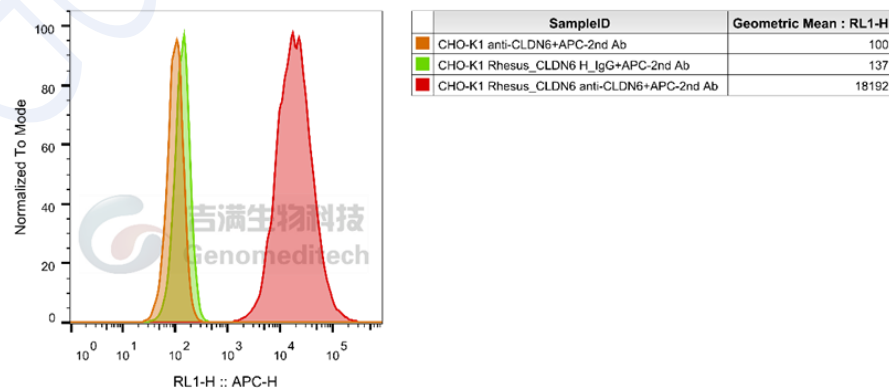


Fig. FACS

Flow cytometry

Rat\_CLDN6 CHO-K1 Cell Line (Catalog # GM-C20073) was stained with Anti-CLDN6/9 hlgG1 Antibody or isotype control antibody.

Version:0.3.2.240521

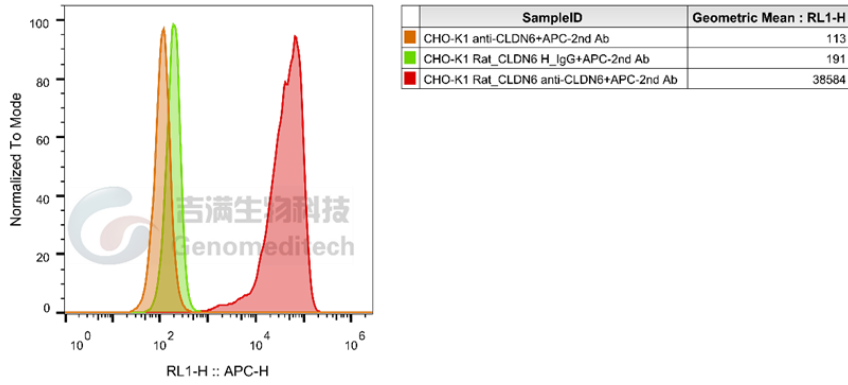


Fig. FACS

### Data Examples(CLDN9)

Flow cytometry

H\_CLDN9 CHO-K1 Cell Line (Catalog # GM-C15749) was stained with Anti-CLDN6/9 hIgG1 Antibody or isotype control antibody.

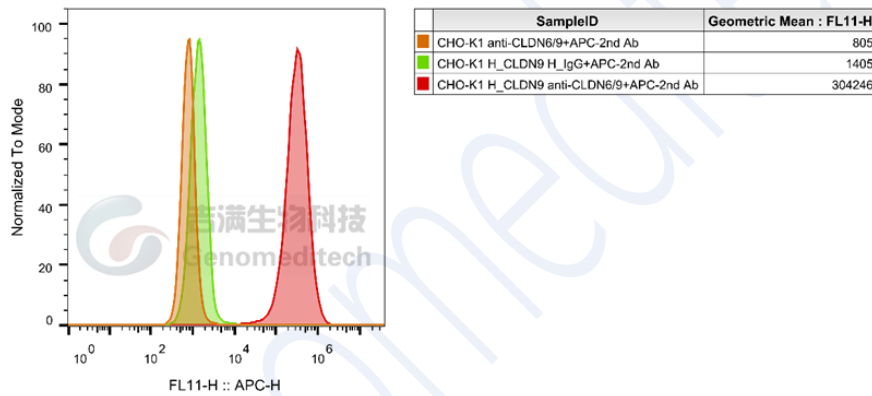


Fig. FACS

Flow cytometry

Cynomolgus\_CLDN9 CHO-K1 Cell Line (Catalog # GM-C24241) was stained with Anti-CLDN6/9 hIgG1 Antibody or isotype control antibody.

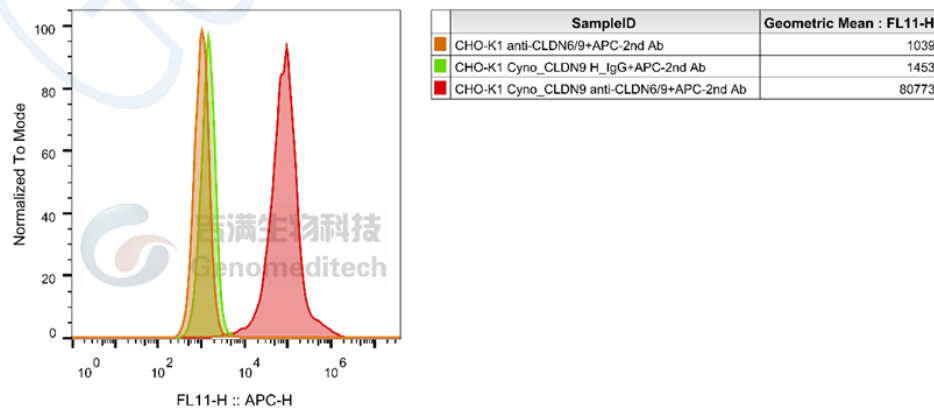


Fig. FACS